

MF-2F 24" x 46" Composite Double Laundry Tub

Model number:

MF20000FM

Dimensions: 23" x 45" x 34"

Mount Type: Floor Mount

Material: Veritek



Standard Features:

- Made of sturdy Veritek with no surface coating to chip or crack
- Will not mold or mildew
- Faucet starter holes on underside of deck (faucet sold separately)
- Includes drain
- Molded-in wash board
- 4 angular steel legs

Product characteristics:

- Virtually Indestructible
- Easy to Clean
- Swan Composite

Warranty:

1 Year

Standard colors:



White (001)

Certifications

Swan products adhere to one or more of the following certifications:



MF-2F 24" x 46" Composite Double Laundry Tub

Model number:

MF20000FM

Dimensions: 23" x 45" x 34" Mount Type: Floor Mount

Material: Veritek



MF-2F and MF-2W Double Laundry Tubs

Manufactured from Veritek®
(See page 2 for detailed information.)

WARRANTY
Limited 1-year – Residential
Limited 1-year – Commercial

FEATURES

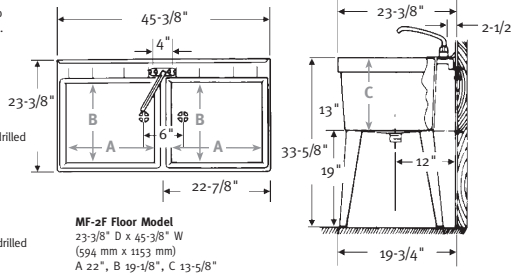
- Made of sturdy Veritek® with no surface coating to chip or crack.
- Will not mold or mildew.

MF-2F Floor Model

- 44-gallon capacity (166L)
- Four legs
- Pre-marked 4" centers but not drilled
- Drain included
- Molded-in wash board

MF-2W Wall Mounted Model

- 44-gallon capacity (166L)
- Wall-bracket assembly
- 4" centers are marked but not drilled
- Drain included
- Molded-in wash board



SPECIFICATIONS

MF-2F & MF-2W Veritek® Double Laundry Tubs in White

Model	Part	Nominal Dimensions	Ship Wt. Lb.	Ship FedEx	Carton Dims. In.	Cu. Ft.
MF-2F Floor Model	MF20000FM	23-3/8" D x 45-3/8" W (594 mm x 1153 mm)	49	FedEx	47 x 24 x 18	11.75
MF-2W Wall Model	MF20000WM	23-3/8" D x 45-3/8" W (594 mm x 1153 mm)	49	FedEx	47 x 24 x 18	11.75

MF-2F Includes: One double tub, factory-installed drain, four legs with hardware and twin waste.

Packaging: Packed in individual cartons only. Not available in six pack.

MF-2W Includes: One double tub, factory installed drain, wall bracket assembly, and twin waste.

Packaging: Packed in individual cartons only. Not available in six pack.

STANDARDS AND RATINGS

American National Standard Institute—ANSI Z124.6
International Association of Plumbing and Mechanical Officials (IAPMO)—Listed
CSA Test Standard B45.5
Uniform Plumbing Code (UPC)

SUPPORT DOCUMENTS

Installation instructions available at swanstone.com.

MAINTENANCE AND CLEANING INFORMATION

Clean regularly with common household liquid cleaners and a sponge or soft cloth. For hard water stains, scale removers can be used. **Do not** use abrasive cleaners or metal scouring pads.

0111111111

Water capacity:

44 gal.

Type of bowl:

Double

Type of sink:

Laundry tub

Number of bowls:

Two

MADE IN USA

Swan • (800)325-7008 • swanstone.com • help@swanstone.com

095-05-19 | 117

Project:

Contractor:

Representative:

Date:

Tel:

Notes:

